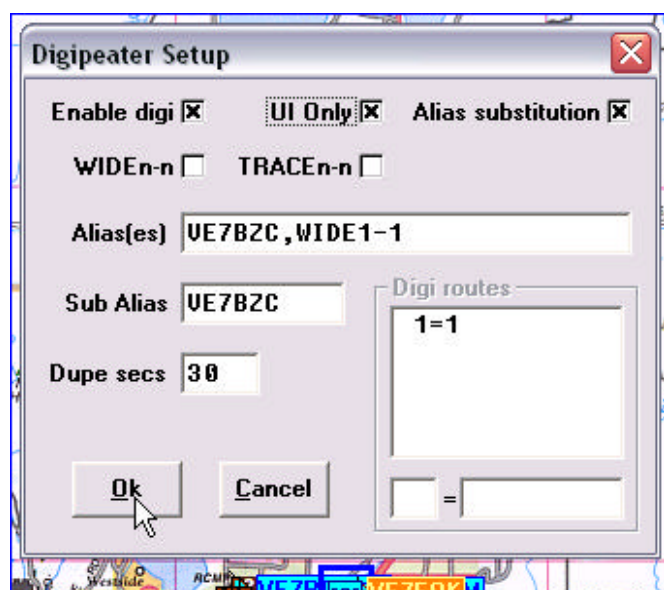


UI-VIEW SETUP FOR FILL-IN DIGI AND FULL DIGI

[UI-View32](#) as a "New Paradigm" [fill-in digi](#). (Material gathered and graphics constructed by VE7BZC)

You must be running your TNC in KISS mode to enable the digipeater in UI-View32.

Go to Setup -> Digipeater Setup
Enable Digi is checked
UI Only is checked
Alias substitution is checked
WIDEn-n is not checked
TRACEn-n is not checked
Alias(es) has VE7BZC,WIDE1-1 <substitute your callsign for mine>
Sub Alias has VE7BZC <substitute your callsign for mine>
Dupe secs = 30
Digi routes has 1=1



Click on OK and you're done.

[UI-View32](#) as a "New Paradigm" [full WIDEn-N digi](#).

You must be running your TNC in KISS mode to enable the digipeater in UI-View32.

This involves opening up a text file, editing it and saving it. **NOTE:** Save a copy of the original file so if something happens you can easily revert back.

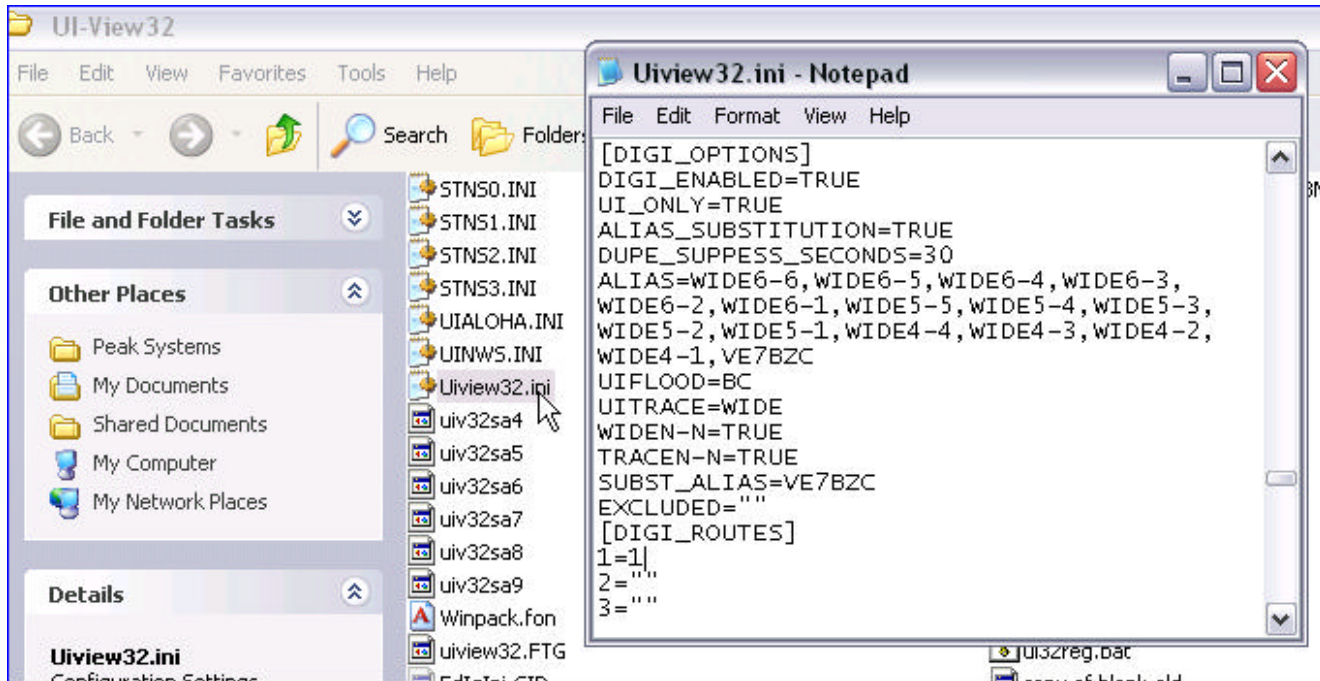
Open the UIVIEW32.INI file (located in C:\Program Files\Peak Systems\UI-View32\) scroll down to the section named [DIGI_OPTIONS] and set it to match this:

```
[DIGI_OPTIONS]
DIGI_ENABLED=TRUE
UI_ONLY=TRUE
ALIAS_SUBSTITUTION=TRUE
DUPE_SUPPRESS_SECONDS=30
ALIAS=WIDE6-6,WIDE6-5,WIDE6-4,WIDE6-3,WIDE6-2,WIDE6-1,WIDE5-5,WIDE5-4,WIDE5-3,WIDE5-2,WIDE5-1,WIDE4-4,WIDE4-3,WIDE4-2,WIDE4-1,VE7BZC <substitute your callsign for mine here>
UIFLOOD=BC <enables BCn-N paths in British Columbia, substitute your province or state >
```

```

UITRACE=WIDE
WIDEN-N=TRUE
TRACEN-N=TRUE
SUBST_ALIAS=VE7BZC <substitute your callsign for mine here>
EXCLUDED=""
[DIGI_ROUTES]
1=1

```

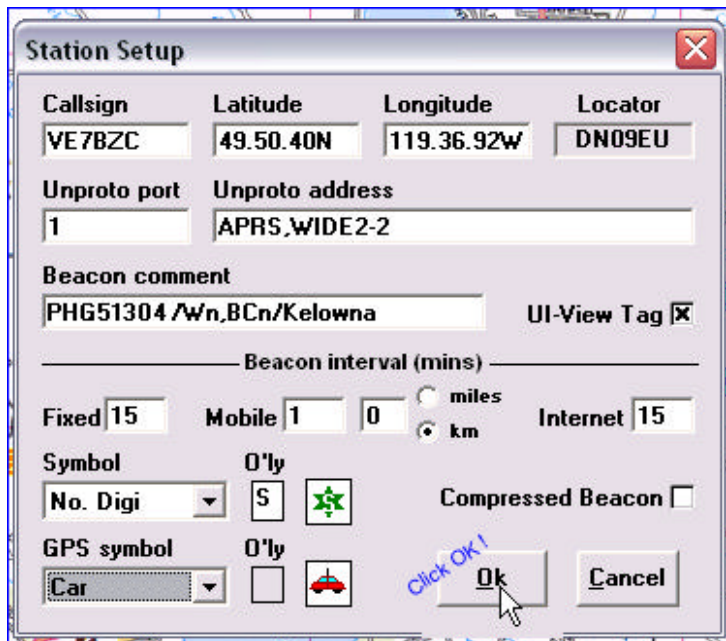


Save the file.

Now change the UI-View32 program "Setup":

Setup -> Station Setup: Beacon comment: PHG51304/Wn,BCn/Kelowna <substitute your actual PHG and City here.> <The PHG shown is equal to 25 watts to an omni antenna at 6 meters above local terrain, probe rate (number of times the PHG packet is transmitted): 4 per hour.>

Setup -> Station Setup: Symbol: **No.Digi O'ly:S**



URL of a good PHG Calculator:
<http://www.apritch.myby.co.uk/phgrcalc.htm>